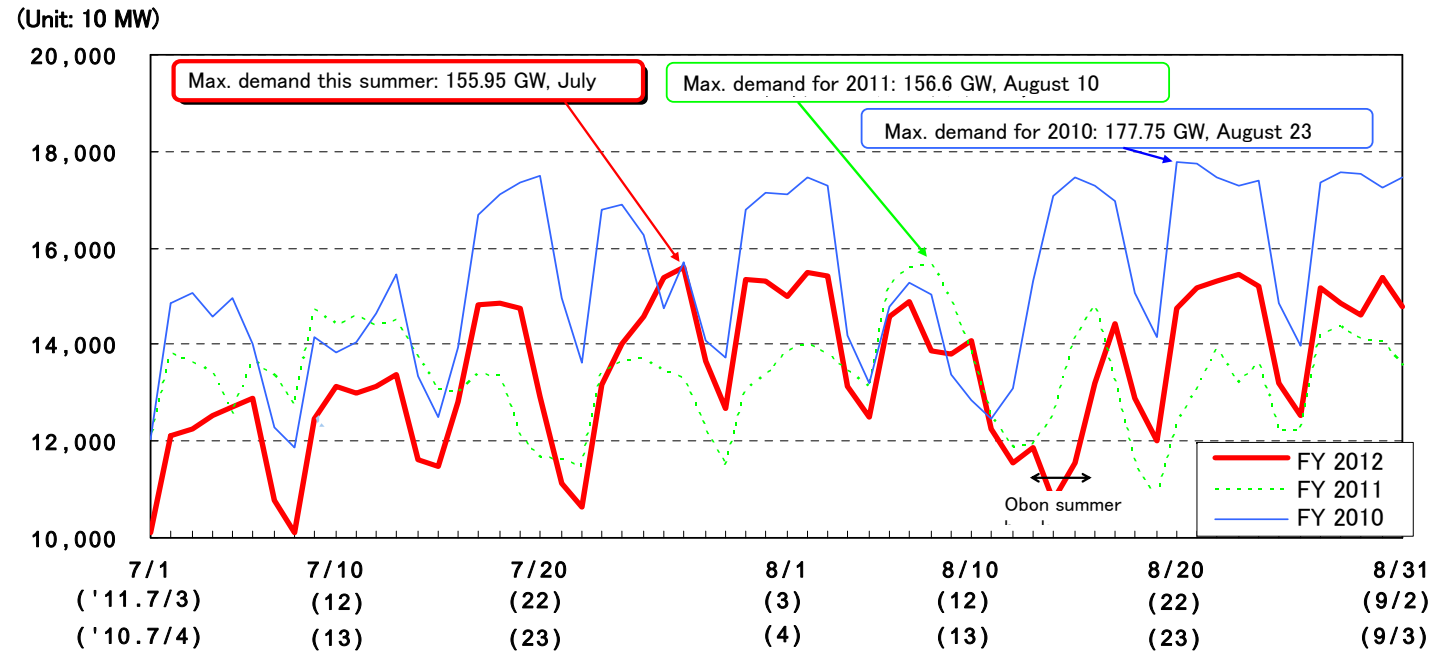


# Electricity Supply and Demand for this Past Summer (July – August)

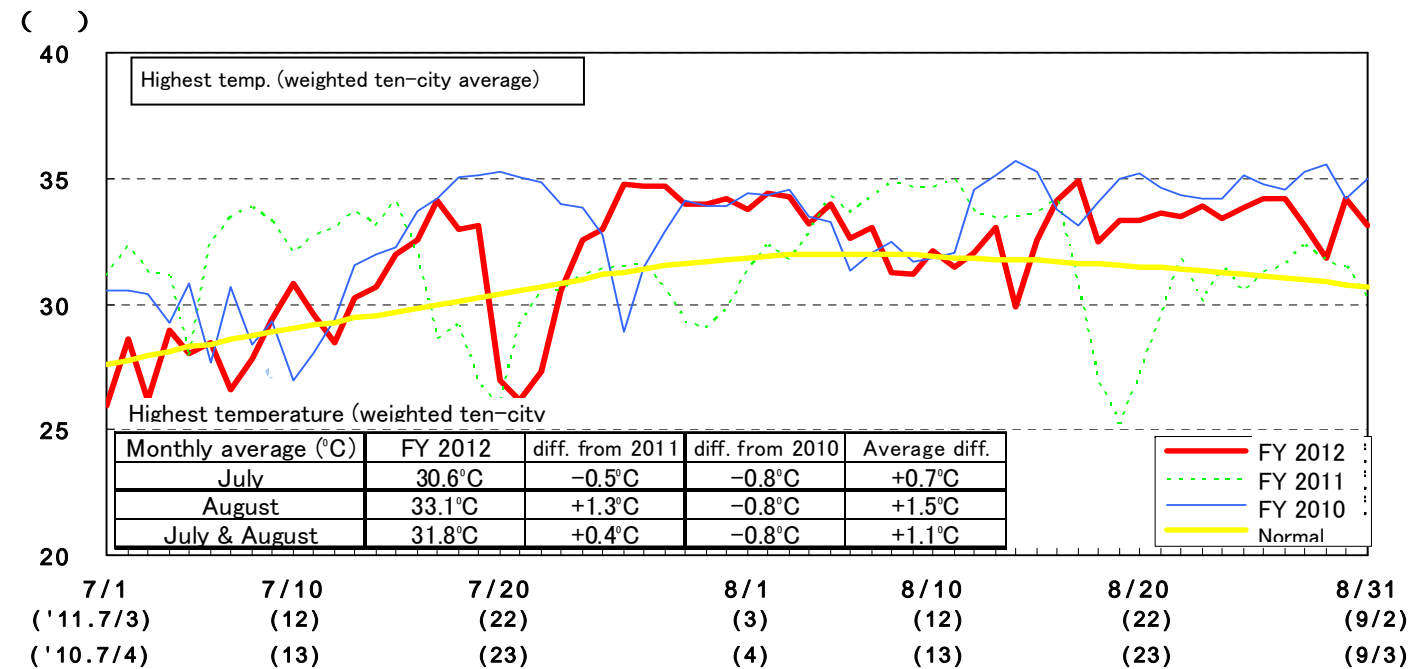
## 1. Combined peak demand of the ten electric power companies (July – August)

○ The combined peak demand of the ten electric power companies was 155.95 million kW recorded at 3 pm on Friday July 27, which was down 650,000 kW (-0.4%) from last year and down 21.80 million kW (-12.3%) from 2010. [Reference] Highest electricity generation in the past: 182.69 million kW at 3 pm, July 24, 2001.



## 2. Temperature trend (July – August)

○ The average highest temperature for July (weighted ten-city average) was 0.5°C lower than last year at 30.6°C, but 1.3°C higher than last year for August at 33.1°C. The highest temperatures were 0.8°C lower for both months compared to 2010.



## 3. Electricity supply and demand of each utility this summer and the supply-demand balance at the time of peak

○ The maximum demand was lower for all companies excluding Tohoku, Tokyo, Chugoku and Okinawa, and was lower in all electric power companies except Okinawa by almost 10% compared to 2010, the year of record heat.

○ The total electricity generated and purchased across the ten power companies for July and August was 167.744 billion kWh, 0.2% higher than last year and 10.0% lower than 2010. The figures were higher than last year in Tokyo and Tohoku which were required to reduce power consumption last year, but were lower for all other power companies except Okinawa.

Company name	Maximum demand				Electricity generated and purchased			
	Usage rate	Occurred at	YoY	Compared to 2010	(Total for Jul. & Aug.)	YoY	Compared to 2010	
Hokkaido	463	93 Aug. 22 5 pm	96.0	91.5	5354	94.2	91.4	
Tohoku	1364	94 Aug. 22 3 pm	109.5	87.6	14279	105.4	88.4	
Tokyo	5078	93 Aug. 30 3 pm	103.2	84.7	53207	102.9	86.3	
Chubu	2478	93 Jul. 27 3 pm	98.3	91.5	24976	99.8	94.0	
Hokuriku	526	91 Aug. 22 3 pm	98.7	91.8	5434	98.4	93.1	
Kansai	2682	89 Aug. 3 4 pm	96.3	86.6	28525	96.8	90.2	
Chugoku	1085	90 Aug. 3 3 pm	100.2	90.4	11725	99.9	93.4	
Shikoku	526	88 Aug. 7 2 pm	96.6	88.1	5538	95.8	90.5	
Kyushu	1521	93 Jul. 26 3 pm	99.1	86.9	16962	98.4	92.9	
Okinawa	148	88 Jul. 6 5 pm	102.8	100.3	1743	101.4	98.2	
<b>Total</b>	<b>15595</b>	<b>89 Jul. 27 3 pm</b>	<b>99.6</b>	<b>87.7</b>	<b>167744</b>	<b>100.2</b>	<b>90.0</b>	

(Note) The values for electricity generated and purchased above are confirmed values for July and quick estimations for August.

## 4. Trend of combined maximum power generation of the ten electric power companies

○ The combined maximum demand of the ten electric power companies this summer compensated by the average maximum temperature of the past 10 years was 155.35 million kW, the lowest since 2000, and 19.46 million kW lower (down 11.1%) than in 2010. Considering that the year 2011 was a record high.

